



Pictures and information for Agrex AGS4/3500 GR-1SE/24

Grain Milling Plant Asset PK-5106

- Manufacturer: Agrex S.p.A.
- Model: AGS4/3500 GR-1SE/24
- Serial: 36179
- Capacity
 - Bushels: 250 Bu./hr.
 - 125 Bu./hr per line
 - Tons: 170 Tons/Day
 - 85 Ton/Day per line
 - Quantity of 2 lines
- 3 Phase, 480/277 Volt, 60 Hz, 320 Amp
- Allen Bradley PanelView Plus 1250 Controls
- Manufactured: 2008
- Hours: <1,000
- Capabilities: Corn, Wheat, Barley, Oats, Rye, Soybeans, Grain Sorghum

1. Loading Hopper











2. Cleaning Unit Sieve







LR 100948
C
US
SP®
ELECTRIC INDUSTRIAL VIBRATOR
FOR HAZARDOUS LOCATIONS

CLASS I	GROUP	C D	OPER. TEMP.
CLASS II	GROUP	EFG	135° C
CLASS I	ZONE 1	GROUP II B	

0518412





3. Destoner





4. Degerminator

Model: DG20

Electrical: 480 Volt, 3 Phase, 60 Hz

















5. Classifier





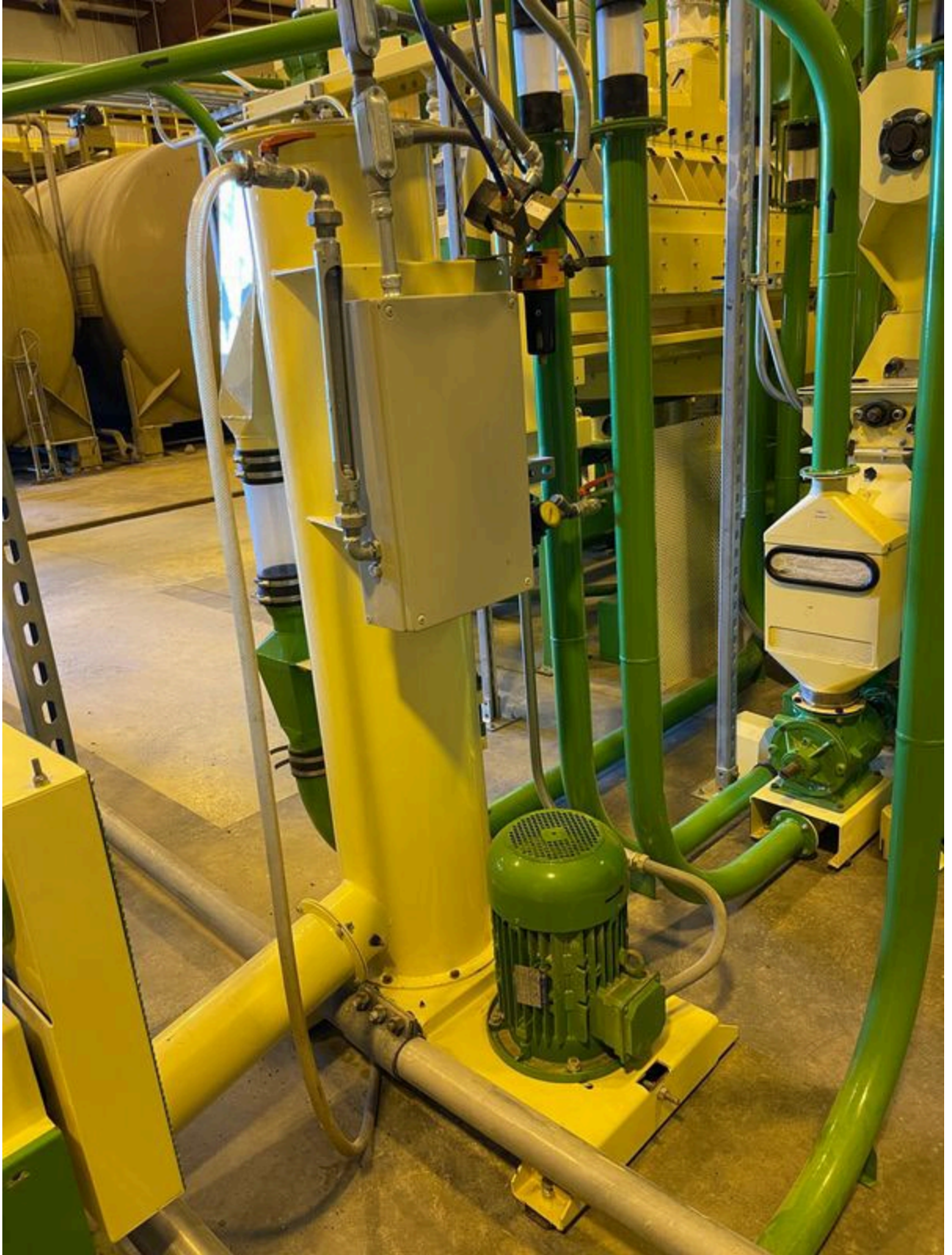






6. Blender

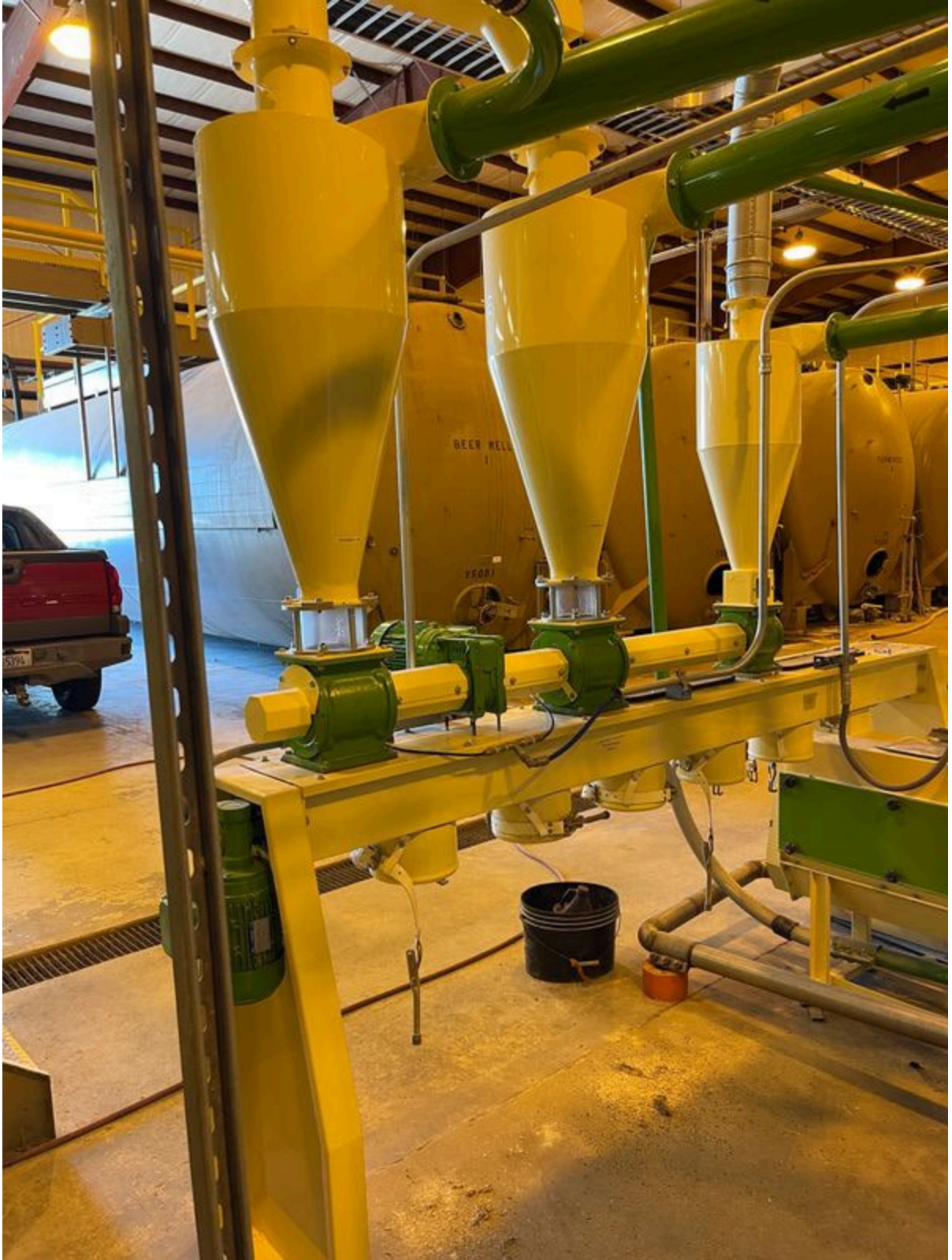






7. Byproduct Collecting Beam











8. Byproduct Filter System







9. Rolling Mill











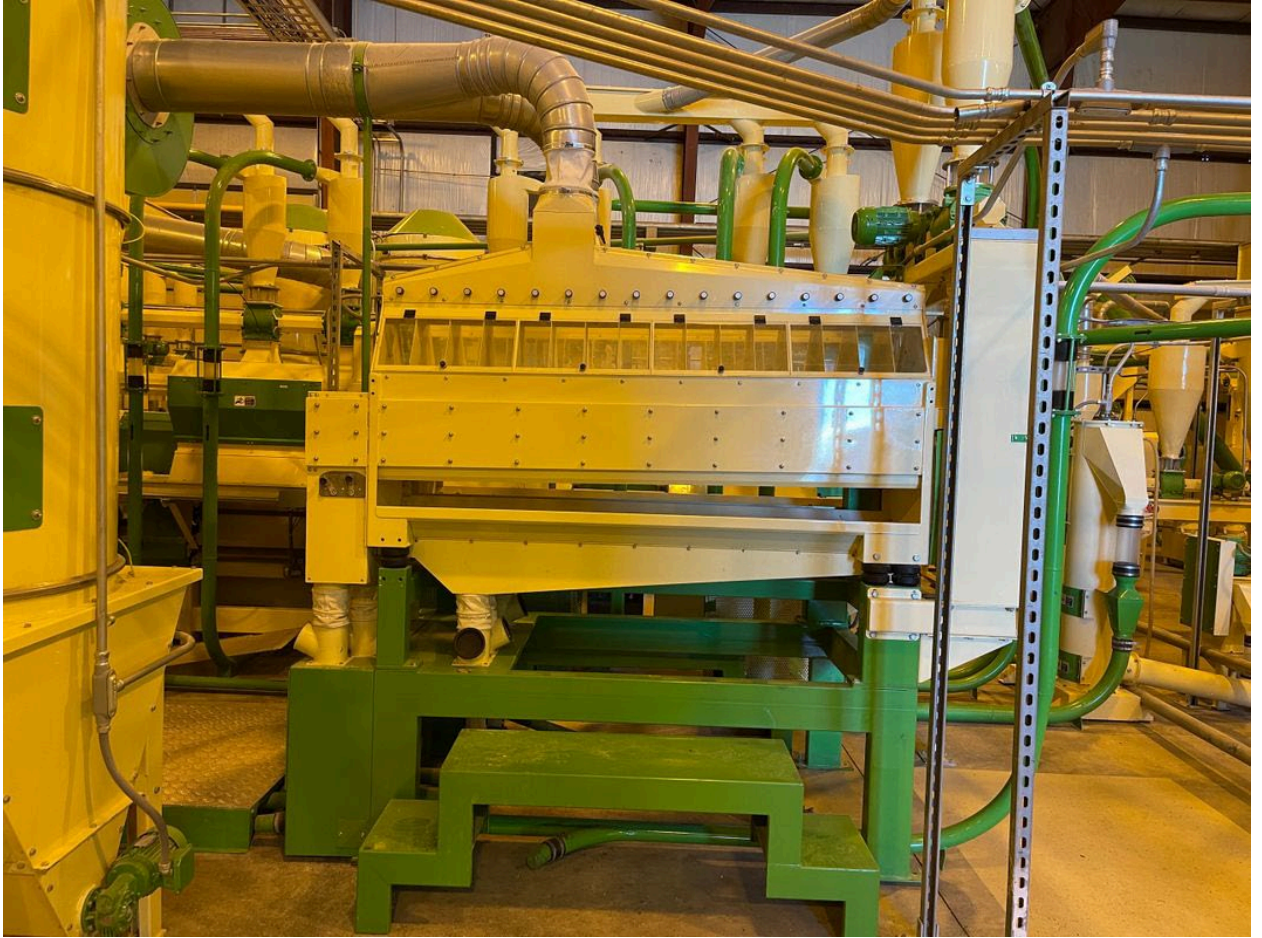
10. Purifier

Model: SE/24

Electrical: 480 Volt, 3 Phase, 60 Hz









11. Purifier Double Filter













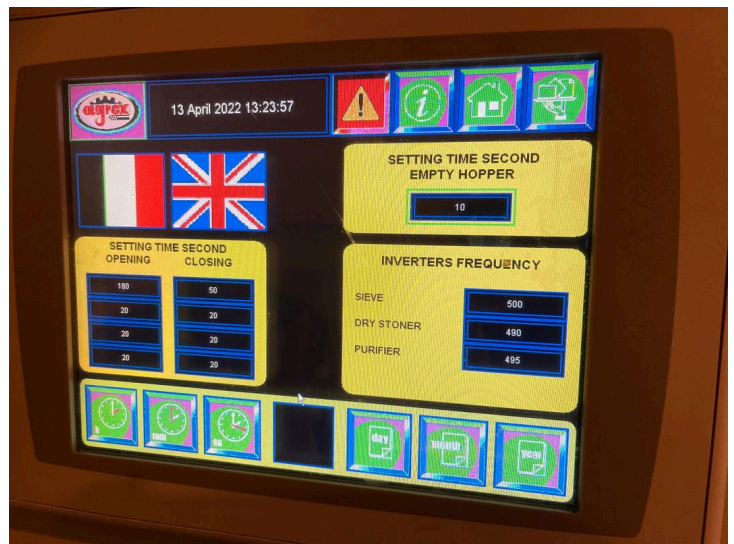
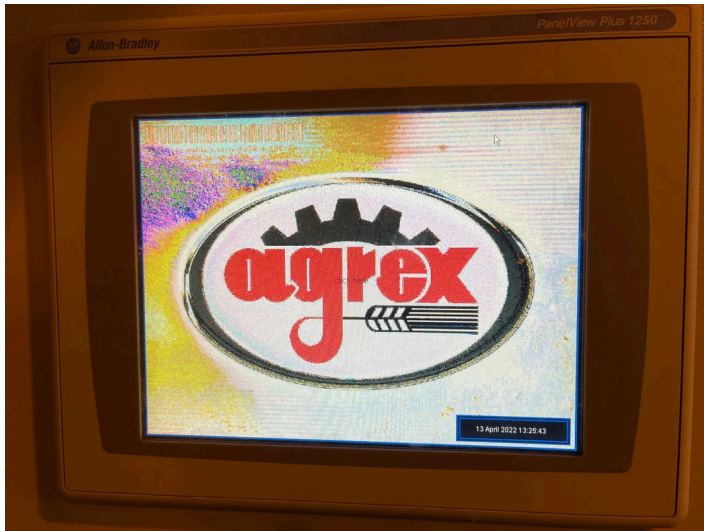








13. Allen Bradley Panelview Controls



The HMI screen displays the following elements:

- Top Bar:** Includes the 'ORPEX' logo, a timestamp '13 April 2022 13:14:52', and navigation icons for warning, information, home, and refresh.
- Left Panel:** Features a schematic of a mill, a digital display showing '1003', and a large cyan slider control. Below these is a '118' indicator and a green 'R' button.
- Right Panel:** Shows a schematic of two mill units labeled 'M12' and 'M13'.
- Bottom Section:** Contains five status indicators, each with a checkmark and a label, and a blue button with a gear icon.
- Status Bar:** A prominent red bar at the bottom of the screen displays the text 'STOPPED MILL'.

